

QUANTITATIVE WHOLE-BODY REAL-TIME FLUORESCENCE IMAGING TECHNOLOGIES

GFP • **RFP** • **GFP & RFP**



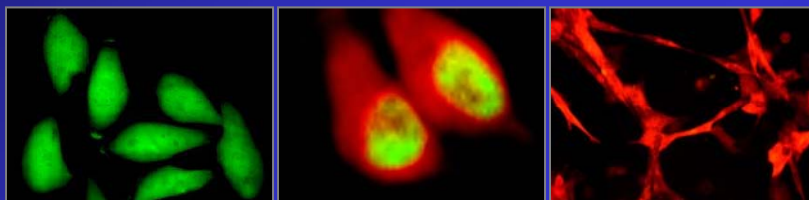
MetaMouse[®] • AngioMouse[®] • OncoBrite[®] • GeneBrite[®]

CONTRACT RESEARCH AND LICENSING

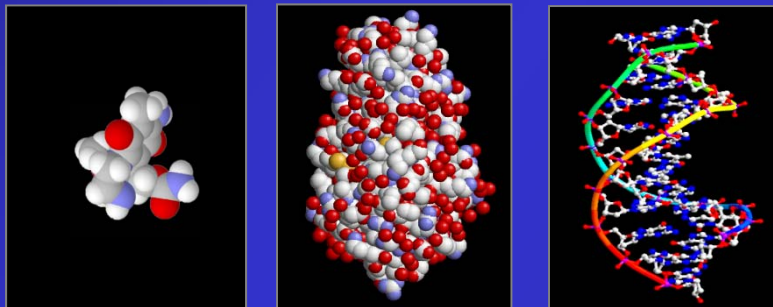


Quantitative Whole-Body Real-Time Imaging Technologies For Drug Discovery and Evaluation*

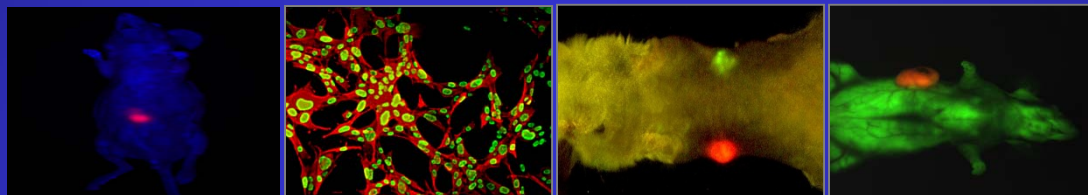
More than 90 GFP, RFP or dual-color expressing tumor cell lines for MetaMouse® and AngioMouse®



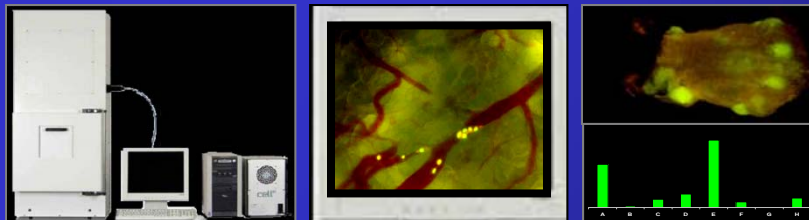
All types of agents: small molecules, proteins, genes can be evaluated in MetaMouse® and AngioMouse®



Dual color models for imaging tumor and stromal cells.



Quantitative high-throughput drug screening and evaluation in vivo. The Olympus OV100, Indec FluorVivo and UVP iBox small animal imaging systems were developed in partnership with AntiCancer technology.



Orthotopic metastatic MetaMouse® – AngioMouse® models: cell lines and patient tumors of all types.

Customized contract research for all types of drug discovery and evaluation.



AntiCancer Inc., is a leading cancer research company providing drug discovery and evaluation services to pharmaceutical and biotechnology companies and cancer researchers for over 20 years.

AntiCancer Inc. has developed numerous novel technologies including MetaMouse® and AngioMouse® – the leading mouse models of cancer.

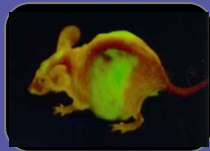
AntiCancer Inc., holds approximately 100 patents for cancer-related products and has published more than 400 scientific papers including in such journals as Cell, Cancer Cell, PNAS.

* GFP patents: US 6,232,523; 6,235,967; 6,235,968; 6,251,384; 6,649,159; 6,759,038; 6,905,831; Japanese patents 3,709,343 and 4,021,197; European patents 979,298 and 1,156,833; Australian patents 749,338 and 2001249297.

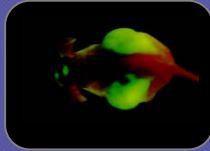
* MetaMouse® patents: US 5,491,284 and 5,569,812; European patent 437,488 Japanese patent 2,664,261. All available for licensing.

Featured Imaging

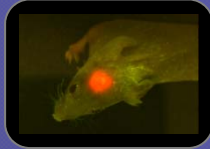
Tumor Growth



Whole-body imaging of liver metastases in MetaMouse®/OncoBrite®

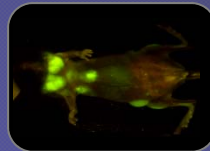


Whole-body imaging of GFP expressing skull and liver metastases.

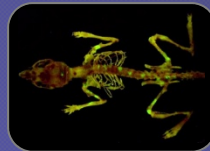


Whole-body imaging of orthotopically-growing RFP human glioma.

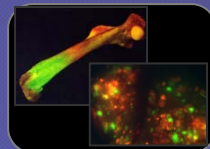
Metastasis



Whole-body imaging of highly disseminated GFP expressing lymphoma.



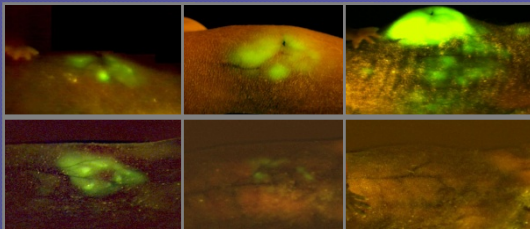
Fluorescence imaging of GFP-expressing tumor metastases in the mouse skeletal system.



Fluorescence imaging of GFP-expressing mouse melanoma bone metastasis.

Dual-color imaging of fibrosarcoma lung metastases.

Anticancer Drug Efficacy



Control

REAL-TIME WHOLE-BODY IMAGING OF DRUG RESPONSE ON HUMAN METASTATIC TUMORS GROWING ORTHOTOPICALLY IN MICE

Drug Treated

0

4

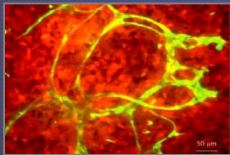
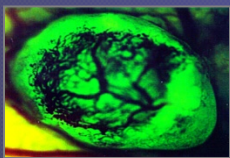
8

Days

Angiogenesis

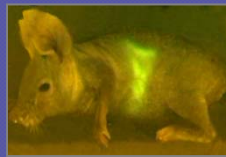


Angiogenesis in GFP-expressing tumors in AngioMouse®

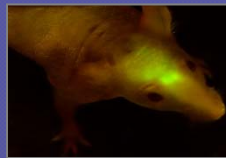


Dual-color imaging of tumor angiogenesis in AngioMouse®

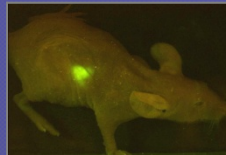
Gene Expression



Whole-body imaging of GFP gene expression in the liver.

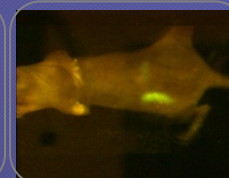
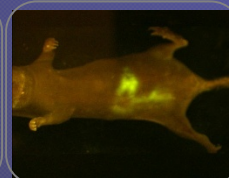
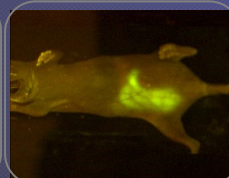
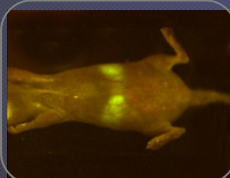


Whole-body imaging of GFP gene expression in the brain.



Whole-body imaging of GFP gene expression in the liver.

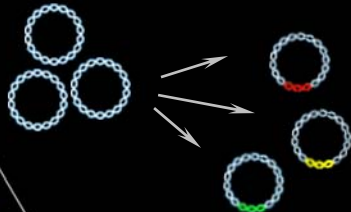
Bacterial Infection



Whole-body real-time imaging of GFP bacterial infection.

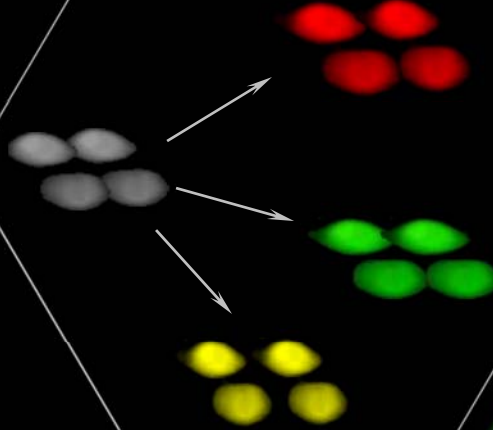
TARGET VISUALIZATION

Fluorescent proteins of different colors linked to genes of interest

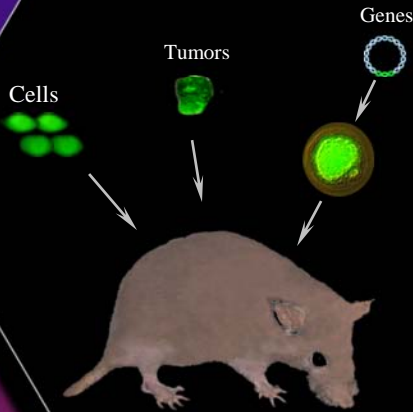


AntiCancer performs all steps

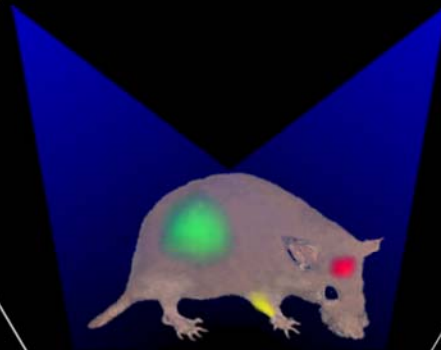
Cell transfection with fluorescent protein genes linked to genes of interest



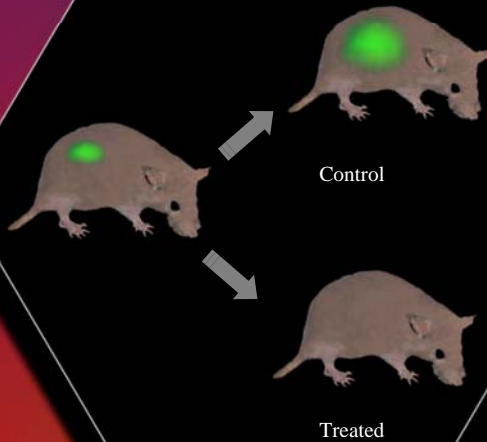
Transfer of visible targets to mice



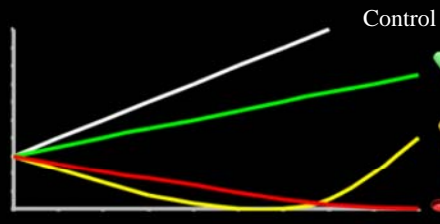
Target visualization



Targeted drug treatment



Discovery and evaluation of candidate targeted drugs



7917 Ostrow Street San Diego CA 92111 USA
Tel: 858-654-2555 Fax: 858-268-4175 E-Mail: all@anticancer.com
www.anticancer.com

Serving the pharmaceutical and biotechnology industry and academia since 1984